

Summer / Fall 2024



PEARL PULSE

Mount Pearl City Guide



CITY OF
Mount Pearl

Welcome



From left to right: Councillors Bill Antle, Chelsea Lane, Isabelle Fry, Jim Locke & Mark Rice.
Front: Mayor Dave Aker & Deputy Mayor Nicole Kieley

What's in this guide?

Come to Play	3
City Days	5
Come to Roam	7
Come to Learn	13
Summer Safety	15
Come to Stay	17
Putting Waste in its Place	19
Come to Life	21

A MESSAGE FROM CITY COUNCIL

Welcome to the second edition of the “Pearl Pulse”!

2024 is shaping up to be an extraordinary year for Mount Pearl, and we are thrilled to share updates on our city. In this edition, you will find the full schedule for Mount Pearl City Days, details on our new community centre, our grass clippings program, and essential summer safety tips.

We are dedicated to supporting new housing projects to welcome more residents. As part of this commitment, we have launched Plan the Pearl, an initiative to build Mount Pearl’s future while maintaining high-quality services.

We are also proud to introduce Come to Life, our new resident attraction campaign, showcasing Mount Pearl’s unique charm and vibrant lifestyle.

Stay connected with us through this guide as we create a vibrant and diverse community. Thank you for being part of what makes Mount Pearl such a wonderful place to live!

Each Friday this summer from 12:00 pm until 1:30 pm recharge and relax with our family-friendly Lunch Time Concert Series.

Grab lunch to go at one of the many restaurants near Centennial Square and take in some tunes from our most talented musicians as they perform from the gazebo at Centennial Park next to City Hall.

CENTENNIAL PARK SUMMER CONCERT SERIES

Learn More: mountpearl.ca/cp-summer-concert-series

Follow us on socials

For up to date information and announcements, follow us on Facebook, X (formerly Twitter), and LinkedIn.



www.facebook.com/mountpearl



www.twitter.com/Mount_Pearl



www.linkedin.com/company/mountpearl



Movies in the Park

We are turning St. David's Park into an outdoor cinema this summer!

Check out the schedule and the family-friendly movies we'll be screening.

Learn More: mountpearl.ca/movie-in-the-park



Come to Play



NEW COMMUNITY CENTRE COMING TO MOUNT PEARL!

We are excited to announce the construction of a new, state-of-the-art community centre at the Team Gushue Sports Complex.

This new facility will replace the Park Place Community Centre, addressing issues like accessibility and parking. The 24,500-square-foot building will feature a multi-purpose space with a stage and retractable bleachers, perfect for events ranging from theatre productions to corporate meetings, with a capacity of up to 1,000 people.

This new community hub, featuring a splash pad that transforms into an ice rink in the winter, is designed for year-round use. It will serve as a space for seniors to socialize, community groups to meet, and for our youth to thrive, meeting the needs of our citizens for years to come.



SUMMER CANOE/KAYAK PROGRAM

Grab your pals and head to Power's Pond to enjoy FREE canoe and kayak rentals.

Hours of Operation*

Friday to Monday	12:30pm to 8:00pm
Tuesday to Thursday	3:30pm to 8:00pm

* Days of operation are weather-dependent.
Please call the info line at **709-764-7635** for updated facility hours.

Location

Power's Pond Boat House
43 Clyde Avenue, Mount Pearl

Don't Forget:

- You are encouraged to bring your own personal flotation device.
- Equipment is provided on a first-come, first-serve basis.
- Maximum of three adults per canoe, or with children – a maximum of 4 people per canoe (at least one adult must be present).


18
THURSDAY


7:00 PM - 9:00 PM
BEST IN MOUNT PEARL AWARDS
Reid Community Centre

CITY DAYS

JULY 18 TO 21, 2024

19
FRIDAY

10:30 AM - 12:00 PM

SENIORS TEA IN THE GARDEN
Admiralty House Garden


1:00 PM - 2:30 PM

SENIORS TEA IN THE GARDEN
Admiralty House Garden

6:00 PM - 9:00 PM
PRIDE IN THE PEARL
St. David's Park

9:00 PM - 11:00 PM
OUTDOOR FAMILY MOVIE
St. David's Park

20
SATURDAY


7:00 AM - 8:00 AM
SUNRISE YOGA
St. David's Park

9:00 AM - 11:00 AM

PRINCESS AND SUPERHERO BREAKFAST
St. David's Park



REQUIRES REGISTRATION

1:00 PM - 3:00 PM
PAWS IN THE PARK
Forest Avenue

1:00 PM - 4:00 PM
BIRTHDAY BLOCK PARTY
Centennial Street



7:00 PM - 9:00 PM
SWIM IN MOVIE
Summit Centre

21
SUNDAY


9:00 AM - 10:30 AM
TRAIL RUN
Outfitters Topsail Road

10:00 AM - 2:00 PM
FAMILY FUN DAY
Admiralty House Museum

2:00 PM - 4:00 PM
MULTICULTURAL COMMUNITY CELEBRATION
St. David's Park


12:00 PM - 4:30 PM
CITY DAYS CORNHOLE CLASSIC
Ruth Avenue Sportsplex

8:00 PM - 9:00 PM
FREE AQUAFIT CLASS
Summit Centre

1:00 PM - 5:00 PM
MULTICULTURAL COMMUNITY MARKET
St. David's Park

5:00 PM - 11:00 PM
MEGA BIRTHDAY BASH
Ruth Avenue Sportsplex



SCAN HERE
TO LEARN MORE

MOUNTPEARL.CA/CITYDAYS



PRINCESS AND SUPERHERO BREAKFAST



MEGA BIRTHDAY BASH



PAWS IN THE PARK

Come to Roam

ESCAPE THE RACE FOR THE PATHS LESS TRAVELLED

TRAILS AND PARKS

Enjoy the beautiful scenery and explore over 60 kilometres of walking trails plus over 50 playgrounds throughout the city. Let the spirit of adventure guide you!

OFF-LEASH DOG PARK

Our dog park, located off 43 Clyde Avenue, next to the Power's Pond Boat House, provides a safe and enjoyable environment for pets and their owners. Your pups can play from sunrise to sunset, 7 days a week.

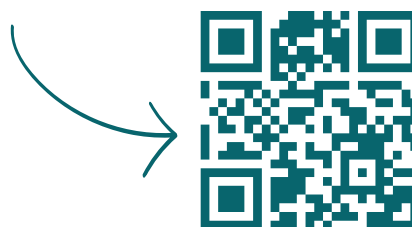
PLAYING COURTS AND FIELDS

Mount Pearl has baseball, softball and soccer fields at Team Gushue Sports Complex and beyond. We have spaces for basketball, rugby, track & field, and more, including beach volleyball courts at the Ruth Avenue Sportsplex and off Westminster Drive.



Scan me!

To view the map of parks,
trails and playgrounds



T'RAILWAY COMMERCIAL KIOSKS

Grab an ice cream and bike through our scenic trails! We're excited to announce new vendors for our T'Railway Kiosks located at the trail entrance at the bottom of Forest Avenue.



Rockateer Treats is a unique candy shop with a delightful twist. Their popular offerings like Dippin' Dots, gourmet marshmallows, and popcorn are available at their new kiosk here in Mount Pearl. Rockateer's freeze-dried candies and goodies are sure to satisfy your craving for something sweet.



Pedego Bikes provide a unique opportunity to explore the city from the saddle of an e-bike. Locally owned and operated, Pedego offers top-quality sales, rentals, and e-bike service. Pedego Bikes makes adventuring through the trails of Mount Pearl easy and enjoyable.



CONSTRUCTION SEASON IN MOUNT PEARL

Warmer weather means construction season is upon us. With numerous projects underway to maintain and improve our city. Residents can stay informed about construction activities and potential traffic disruptions, utility impacts, and more.

For the latest updates, please visit mountpearl.ca/construction-notices

Facility Rentals

The City of Mount Pearl provides a variety of rental spaces to meet the diverse needs of its residents, businesses, and organizations. Whether you are looking for event venues, meeting spaces, or recreational facilities, Mount Pearl offers a range of rental options.

To learn more, visit mountpearl.ca/bookings



T'RAILWAY SUNDOWN SERIES

The T'Railway Sundown Series, a captivating collection of events, that showcases the remarkable beauty of our trail system. It invites residents and visitors to immerse themselves in the city's beautiful outdoors.

This year, two events are set to take place on August 8 and August 22.

The T'Railway Sundown Series is more than just events - they are celebrations of outdoor living, community, and the beauty of Mount Pearl.

Learn More: mountpearl.ca/trailway-sundown-series



Keith Power
SINGER/PERFORMER



Evelyn Jess
SINGER/SONGWRITER

JULY 19 | 6 PM-9 PM | ST. DAVID'S PARK

PRIDE IN THE PEARL

ALL AGES EVENT | BBQ | GAMES
PRIDE SWAG | LIVE MUSIC | PLUS MORE!



Don't Miss Out

OUR OUTDOOR FAMILY MOVIE
SHOWING AFTER OUR PRIDE EVENT

← GRAB A BLANKET, SNACKS, CHAIRS, AND YOUR FRIENDS
& FAMILY TO ENJOY A MOVIE IN ST. DAVID'S PARK!



Citizen Alert

Sign up for alerts to be in the know about what is happening in our city.

Scan here



Learn more at
mountpearl.ca/citizen-alert

Stay connected! Citizen Alert is a tool that provides communication from the city directly to you, our residents. By signing up, we'll keep you in the loop on emergencies, service interruptions, and more!

Citizen Alerts may include, but are not limited to:

- Garbage/recycling collection schedule changes or cancellations
- Major construction projects
- Emergency communications (e.g. severe weather, major fire)
- Severe traffic disruptions
- Watermain breaks that affect a large area
- Boil order advisories

How will you be notified?

You can receive notifications through phone calls, text messages, and/or emails.

What if your neighbourhood is not affected?

Citizen Alert uses a geographic information system where an alert can be tailored to a particular area in the city. For example, for garbage/recycling schedule changes, only individuals along the affected route will be notified. For other alerts, such as weather emergencies, all residents who signed up for Citizen Alert will be notified.



Upgrade to Mount Pearl

We're in the business of helping your business take off. With streamlined permits, tax incentives, and an 'open for business' policy, we treat you as a partner. We're here to help - whether that is finding the perfect location to scale your growing business, or reaching the epiphany that will take things to the next level. We've got your back. So you can forget 'business as usual'.

To learn more, visit upgradetomountpearl.ca

PLAN THE PEARL

Mount Pearl
Municipal Plan
Renewal



We are embarking on a journey to renew our Municipal Plan and develop a new Integrated Transportation & Mobility Plan. While the term "Municipal Plan" may not sound thrilling, it is actually one of our most crucial documents!

A new Municipal Plan will guide us forward into the next decade and serve as a blueprint for our city's growth and development. We are re-creating our development regulations – regulations that will become the roadmap for embracing innovative housing and business opportunities, and incorporate transportation needs.

Over the coming months, there will be opportunities for you to get involved and give us your insight. After all, it is about the future of your city!

Scan me!



To visit our interactive project website heymountpearl.ca and get involved!

Come to **Learn**

HOW WE STRIVE TO MAKE THIS A BETTER CITY, EVERYDAY

Together, we can create a more inclusive community by removing barriers for persons with disabilities.

Our Accessibility Plan, which is a living document, outlines our objectives and strategies for achieving this inclusive environment. We recognize the importance of community input in shaping and refining our initiatives so we have arranged town hall meetings to discuss accessibility in our community to take place this fall.

A schedule of our town hall meetings and a link to our Accessibility Survey can be found at mountpearl.ca/accessibility



Accessibility Goals



Provide ongoing accessibility and inclusion training for all city staff.



Conduct an accessibility audit of public spaces and address identified barriers.



Develop workplace accommodation guidelines.



Ensure job advertisements and applications are accessible.



Ensure equitable access to all programs and services.



Build a fully accessible boardroom at City Hall.



Install accessible stages at the Reid Community Center and Glacier.



Replace wooden pathways at Brandscombe Pond and Power's Pond with granular stone.



Upgrade the Team Gushue Complex with accessible pathways and bleachers.



Expand sensory-friendly public swim sessions at the Summit Center.



Upgrade our website to comply with WCAG 2.1.



Create an accessibility information page on the city website.

Summer Safety

Make the most of summer and always keep safety in mind. Whether you are exploring parks, learning about outdoor events, or enjoying the sunny trails, this guide has you covered. Stay informed, stay safe, and embrace the magic of a Mount Pearl summer!



BEAT THE HEAT

While extreme heat is rare here, stay safe on hot days by drinking plenty of water and limiting midday sun exposure. Check the UV index daily, use sunscreen when staying in the shade is not possible, and wear loose, light-coloured clothing.



DRIVE WITH CARE

Reduce speeds in residential areas, particularly near playgrounds or places where children frequently gather or ride bicycles. Now that school is out and construction season has begun, maintaining street safety by lowering your speed and driving with care, caution, and control is essential. Never leave a child or pet in a car as temperatures can quickly escalate to dangerous levels. Regardless of the season, always wear a seatbelt, avoid distractions like cell phones, and never drive impaired.



AVOID WATER WOES

Stay safe around water by wearing a properly fastened lifejacket or personal floatation device. Keep an eye on children, especially around pools or bodies of water. Be aware of weather conditions, stay sober and alert, and always swim with a buddy.



ENJOYING THE GREAT OUTDOORS

When biking, hiking or camping, prioritize safety by wearing a properly fitted helmet, carrying a first-aid kit, extra clothing, and water. Always hike with a buddy and let someone know where you are going and when you'll return. Never leave a campfire unattended and keep water and a shovel nearby.



AVOID CRITTERS, BIG AND SMALL

To avoid critters big and small, it's important to be prepared, especially as anaphylaxis can be life-threatening. You can reduce the risk of bug bites and unwanted interactions with wildlife by using insect repellent, wearing long sleeves, and carrying a first aid kit with supplies to treat bites and stings, including EpiPens. It is also important to learn how to recognize and properly remove ticks. When observing wildlife, do so from a safe distance, and if camping, store food properly to avoid attracting animals.



PREVENT FOODBORNE ILLNESS

Prevent food poisoning when dining outdoors by washing hands before handling food and using a cooler with ice packs to keep it below 4°C. Keep raw meat, poultry, and seafood separate from other food, and clean all cooking equipment and utensils with soap and water.

BICYCLE SAFETY TIPS



1 PROTECT YOUR HEAD



2 OBEY TRAFFIC SIGNS



3 PLAN YOUR ROUTE



4 STAY OFF YOUR PHONE



5 KNOW THE DANGERS



6 USE HAND SIGNALS

Come to Stay

INCREASING HOUSING SUPPLY

The City of Mount Pearl has announced a partnership with the Canadian Mortgage and Housing Corporation to help increase the population density in our city through the Housing Accelerator Fund. We are committed to ensuring that this initiative benefits our residents, not just landowners and developers.

The Homeowners Incentive Program includes grants of up to \$20,000 to help current homeowners add an accessory dwelling or apartment to their current home, and up to \$10,000 to bring unapproved units up to code so they can be legally registered. These efforts will increase the housing supply and provide more affordable options for residents to live.

As part of the action plan, we have also introduced incentives to create more housing units, optimize existing spaces, and redevelop underutilized parcels of land. The fund includes various grants and fee waivers to stimulate new construction and redevelopment projects with a target of adding 386 units over the next three years.

Find out more and how we are helping developers cut through the red tape, here: mountpearl.ca/housing





MOUNT PEARL
summit
CENTRE

Memberships start at just \$26/month
on an annual plan. Learn more at
mountpearl.ca/summitcentre

Putting Waste in it's Place

Regular household garbage and recycling is collected once a week, from Tuesday to Friday, with each street receiving collection on a specific day.

EXPECTED SCHEDULE CHANGES

On statutory holidays, your collection schedule will change as follows:

Holiday	Impacted Collection Date	Revised Collection Date
Regatta Day	The day that the Regatta proceeds	Monday, August 12, 2024
Christmas Eve	Tuesday, December 24, 2024	Monday, December 23, 2024
Christmas Day	Wednesday, December 25, 2024	Tuesday, December 24, 2024
Boxing Day	Thursday, December 26, 2024	Saturday, December 28, 2024
New Years Day	Wednesday, January 1, 2025	Saturday, January 4, 2025

Subject to change. For the latest information, visit mountpearl.ca/residents/garbage

UNEXPECTED SCHEDULE CHANGES

For collection postponements due to adverse weather or other circumstances, please stay tuned to social media and check out our website, mountpearl.ca

You may also sign up for the city's Citizen Alert service to receive notifications through phone calls, text messages, and/or emails. For more information, please visit mountpearl.ca/citizen-alert

HOUSEHOLD HAZARDOUS WASTE

Residents can dispose of their household hazardous waste (HHW) at the HHW Depot, located at Robin Hood Bay, 340 East White Hills Road. This facility is for residential waste only. For more information visit robinhoodbay.ca

YOUR 2024 WASTE GUIDE

Please note that the 2024 Waste Guide was included in the Winter issue of the Pearl Pulse. From now on, **we will not produce a separate Waste Guide. Instead, all of the necessary information will be incorporated into the Pearl Pulse** issue that is published nearest to the new year.

You can find this guide on our website, where both a digital version and a printable PDF copy are available for your convenience:
mountpearl.ca/residents/garbage

WE'RE GOING GREEN WITH ORGANIC YARD WASTE BAGS!

The city has just launched a new Organic Yard Waste Collection Program. By placing grass clippings in compostable paper bags, you can help save the city thousands of dollars in tipping fees each year. That's money we can put back into maintaining and improving city services!

NOXIOUS WEEDS & INVASIVE PLANTS

If you believe your grass clippings include noxious weeds or invasive plants such as Goutweed and Japanese Knotweed, place them in a sealed plastic bag so they can be collected with your regular household refuse on garbage day.

For more information about noxious weeds and invasive plants, please visit the **Government of Canada website**.

OUR APPROACH TO WOOD WASTE

The City of Mount Pearl is committed to environmental sustainability and has a free wood chipping program for its residents. This initiative allows residents to remove wood waste, including trees, branches, and small logs, from their properties. We ask these are to be cut to 6 inches in length bundled and tied and placed at the curb.

For more information visit:
mountpearl.ca/residents/garbage

ORGANIC YARD WASTE COLLECTION

DITCH THE PLASTIC



Get started with a free compostable paper yard waste bag from City Hall!

*While quantities last



CUT AND COLLECT

Set your mower to mulch for a healthier, greener lawn, then bag yard waste in paper bags for collection.

IT IS EASY BEING GREEN



Place paper yard waste bags at the curb one meter from your garbage cart; the City's Street Fleet will pick them up on garbage day!



TURNING RUBBISH INTO RESOURCES

Organic yard waste, paper bags and all, is turned into mulch at Robin Hood Bay, making the system greener and extending the life of our landfill.

Come to Life

INTRODUCING OUR RESIDENT ATTRACTION CAMPAIGN

Life is what you make it, and in Mount Pearl, you can choose your own path. There is something about our rhythm here. Life can be as fast, or as slow, as you'd like. Whether you embrace the hustle and bustle, or you're drawn to kicking back and taking it all in, Mount Pearl has something to match your vibe.

Slow down and take a breath. Amidst natural beauty and charming neighbourhoods lies a beautiful network of scenic trails, playgrounds, and friendly faces. Or ramp it up. Take part in our world-class community events, reach for adventure, or go out for a night on the town.

Step into a welcoming community that celebrates diversity and inclusivity. Mount Pearl is more than just a city; it is a close-knit family where everyone belongs.

Come To **Play**.
Come To **Learn**.
Come To **Roam**.
Come To **Stay**.
Come To **Life in Mount Pearl**.

As our city grows and attracts more residents, we want to ensure your dreams become a reality. Learn more at cometolife.mountpearl.ca





WiFi Zones

MountPearl_PublicWiFi

The City of Mount Pearl offers **FREE PUBLIC WIFI** throughout the city at the following locations:

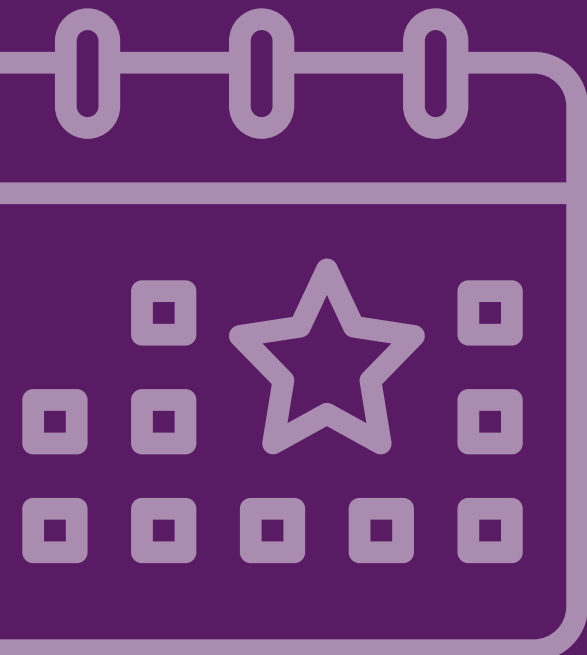
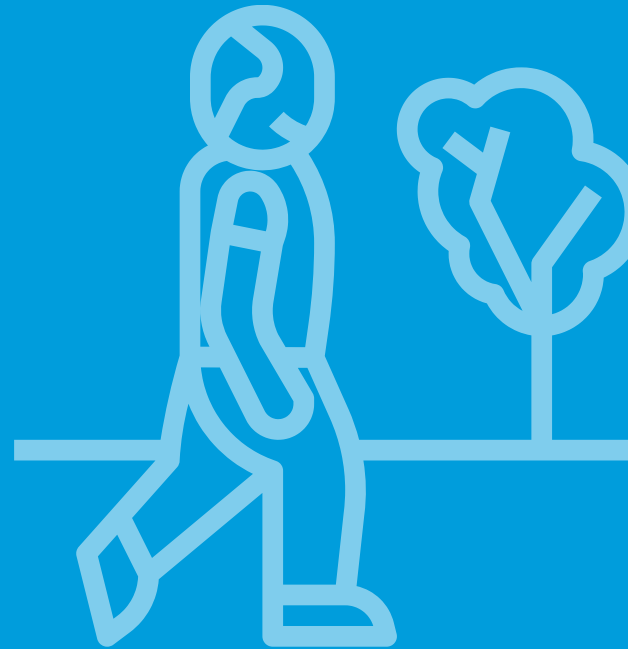
- Team Gushue Baseball
- Team Gushue Softball
- Team Gushue Soccer
- City Hall
- St. Davids Park
- Summit Centre
- Reid Centre
- Glacier
- Track & Field Building
- Public Works (Depot)
- Gloria Pearson Centre

Safe Seniors Walks

The bi-weekly Safe Seniors Walk program offers guided walks or rides on flat, well-maintained paths, led by trained leaders for safety. It provides an enjoyable and accessible physical activity for seniors with a Municipal Enforcement Officer and Park Patrol.

The Safe Seniors Walks occur every other Thursday from June through September, starting at 10 am.

For more information: mountpearl.ca/safeseniorswalks



More Events to Come

There are many exciting events to look forward to in Mount Pearl throughout 2024.

Notably, our Spooktacular Haunting of Power's Pond promises to thrill and chill or our Oktoberfest, a celebration of local breweries plus the All is Bright Spectacular will dazzle and delight with festive cheer. We'll wrap up the year with our First Night Celebrations.

To stay up to date with all these events and more, visit mountpearl.ca/events



mountpearl.ca



info@mountpearl.ca



709.748.1000



facebook.com/mountpearl



twitter.com/Mount_Pearl