

Winter 2026



PEARL PULSE

Mount Pearl City Guide

2026 Garbage and Recycling Guide Inside | Pages 23 - 34

Welcome

A MESSAGE FROM CITY COUNCIL

As we step into 2026, Council remains focused on building a vibrant, inclusive city where everyone feels at home.

Mount Pearl has always been known for being more than just a city—it's a place where safety, opportunity, and community thrive. It's a city recognized for exceptional services and sound financial management, and a place where civic engagement and a sense of togetherness are second to none.

This edition of The Pearl Pulse highlights some exciting updates—from a sneak peek at our new Community Centre to improvements coming with our redesigned website, making it easier than ever to connect with City services.

We are proud to share progress on our Community Safety and Well-Being Plan, with concrete actions underway to ensure Mount Pearl remains a safe and welcoming place for all.

Inside, you will also find everything you need in the updated Waste Guide, including changes to bulk garbage zones—so be sure to keep it handy!

Thank you for your continued trust and support. Together, we are shaping a Mount Pearl that is driven by community spirit and built for everyone.

Mount Pearl City Council



Dave Aker | Mayor
daker@mountpearl.ca
709.748.1030



Nicole Kieley | Deputy Mayor
nkieley@mountpearl.ca
709.330.0203



Bill Antle | Councillor
bantle@mountpearl.ca
709.763.5328



Isabelle Fry | Councillor
ifry@mountpearl.ca
709.687.2298



Chelsea Lane | Councillor
clane@mountpearl.ca
709.690.0256



Jim Locke | Councillor
jlocke@mountpearl.ca
709.364.4746



Mark Rice | Councillor
mrice@mountpearl.ca
709.682.7544

WHAT'S IN THIS GUIDE?

• New Community Centre	3
• Transportation Update	4
• Snowshoe & Ski Program	5
• Summit Centre	6
• Community Safety & Well-Being Plan	7
• New City Website	9
• Planning, Engineering & Development Update	10
• 2026 Frosty Festival	11
• More Events to Come!	13
• Youth Programs	14
• Inclusive Mount Pearl	15
• Winter Tips	17
• Housing Accelerator Fund	19
• Hey Mount Pearl	20
• Citizen Alert	20
• Traffic Calming	21
• St. David's Park Social Walks	22
• Safe Seniors Walks	22
• Neighbourhood Watch	22

2026 WASTE GUIDE

• Weekly Collection	24
• Bulk Garbage	27
• Collection Schedule	29

New Community Centre



HEADED FOR THE HOME STRETCH!

We're excited to share a sneak peek of the interior concept of Mount Pearl's new, state-of-the-art Community Centre, located at the Team Gushue Sports Complex.

Here's what to expect:

- 24,500 square feet of modern, fully accessible multi-use space
- Flexible event space with a stage and retractable seating
- Capacity for up to 1,000 guests—ideal for everything from theatre productions to corporate events
- Splash pad that transforms into a winter ice rink

Bookings will open soon—and we can't wait to welcome you!

Stay tuned for details on how to reserve space and be part of the next chapter in Mount Pearl's community life.

For information on booking any City facility, visit:
mountpearl.ca/recreation/bookings



INTEGRATED TRANSPORTATION PLAN: A SMARTER WAY TO MOVE

In conjunction with the Municipal Plan review, Mount Pearl developed its first Integrated Transportation Plan—a strategy to improve how we get around by offering real choices beyond cars.

The plan focuses on four key areas: roads, active transportation, transit, and parking. It aims to make travel safer, more connected, and accessible—whether you're walking, biking, busing, or driving.

As part of this work, we launched a public transit survey in November, gathering 365 responses. Your feedback is helping us understand how residents use transit and what improvements matter most.

This plan is about more than transportation—it's about building a healthier, more inclusive, and sustainable Mount Pearl for the future. Stay tuned for updates in early 2026, and learn more at [hey Mount Pearl.ca](https://www.hey Mount Pearl.ca)



WE'RE UPDATING THE T'RAILWAY & COMMONWEALTH PEDESTRIAN CROSSING!

Trans Canada Trail is pitching in to help make this crossing safer and more accessible for everyone.

Coming in 2026:

- User-Activated Pedestrian Signal
- Safer Trail Alignment & Raised Median
- Improved Signage
- Traffic Calming & Access Changes

Stay tuned for updates at [hey Mount Pearl.ca](https://www.hey Mount Pearl.ca)!

Together, we're building a safer, more connected community.



SNOWSHOE & CROSS-COUNTRY SKI PROGRAM

Gather your friends and head to Power's Pond!
The City of Mount Pearl offers free snowshoe and cross-country ski rentals for residents and visitors alike.

Hours of Operation*

Monday to Friday	6 PM to 9 PM
Saturday and Sunday	10 AM to 6 PM

Accessible
equipment
available!

* Days of operation are weather dependent.
Please call the info line at **709.764.7635** for the most up-to-date facility information.

Location

Power's Pond Boat House
43 Clyde Avenue, Mount Pearl

Please Note

- The rental period is two hours per person.
- Equipment is provided on a first-come, first-served basis.
- Both child and adult sizes available.

CONQUER YOUR WINTER FITNESS GOALS

Keep your fitness goals on track at the Mount Pearl Summit Centre!

With state-of-the-art equipment, a gymnasium, and a walking track, we've got everything you need to stay active all season long.

Fitness Memberships as low as **\$305/year**, with drop-in sessions starting at **\$6.50!**

Make fitness a family affair! Save **15%** on your second membership and **10%** off for additional family members (conditions apply).

Visit mountpearl.ca/summitcentre for fitness classes, schedules, and more!



MAKE A SPLASH WITH US THIS WINTER

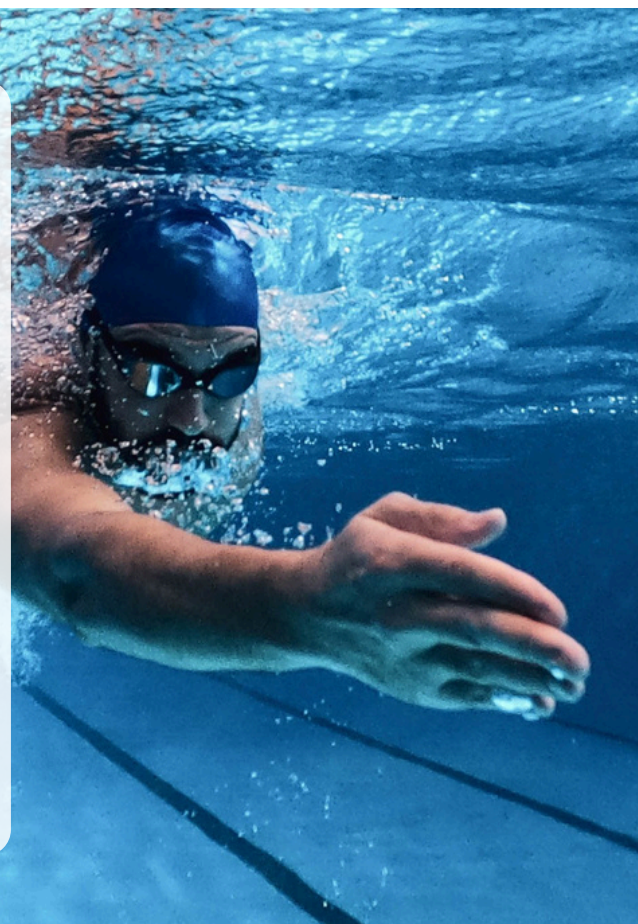
When the temperatures drop, warm up with aquatic activities at the Mount Pearl Summit Centre!

Whether you're swimming laps or enjoying family swim time, our two pools offer the perfect escape from the cold.

Aquatic Memberships start at just **\$50/month**, with drop-in swims from **\$4.**

Ask about our swim packages for extra savings!

Visit mountpearl.ca/summitcentre for swim schedules and everything you need to make a splash this winter!



Community Safety & Well-Being Plan



BUILDING A SAFER, MORE CONNECTED MOUNT PEARL

The City of Mount Pearl is proud to share the progress of our **Community Safety and Well-Being (CSWB) Plan** — a community-driven blueprint to create a safer, more inclusive city for all.

WHO'S INVOLVED

Our CSWB Steering Committee brings together voices from: City Council, Municipal Enforcement & Royal Newfoundland Constabulary, Citizen's Crime Prevention Committee, Seniors Independence Group, Department of Justice, NL Health, Youth Outreach & School Administrators, the Chamber of Commerce, and the Association for New Canadians.

COMMUNITY VOICES

The plan was shaped by:

- 500+ survey responses
- 8 focus groups
- 22 interviews
- Direct feedback from residents, reflecting real lived experiences

Survey participants included:

- Seniors, youth, parents, and families
- Women under 45
- 2SLGBTQQIA+ residents
- Newcomers and equity-deserving communities
- Housing advocates and business leaders



OUR SHARED PRIORITIES

Guided by community input and Thinkwell Research, we've identified six key areas for action over the next five years:

1. Youth Safety, Engagement & Development
2. Safe & Inclusive Public Spaces
3. Mental Health & Social Supports
4. Building Trust & Collaboration
5. Responsive Safety & Enforcement
6. Housing, Mobility & Urban Design



WHAT'S NEXT?

Over the next five years, this plan will guide our efforts to:

- Put strategies into action
- Adapt to changing community needs
- Stay connected by listening and engaging with residents

Learn more and get involved at heymountpearl.ca/safetyplan

SHARE YOUR THOUGHTS

Your voice matters in shaping a safer Mount Pearl. Whether you have questions regarding the plan or want to share your experiences, we're listening.

Email us at mysafecity@mountpearl.ca to contribute to the conversation.

**UPSKILLING
PREVENTION BY
STRENGTHENING
READINESS,
ENGAGEMENT
AND
MULTISECTORALITY**



Canadian Centre for
Safer Communities

Funded by the
Government
of Canada

Financé par le
Gouvernement
du Canada

Canada

INTRODUCING THE UPSTREAM PROJECT

Mount Pearl is one of only 10 pilot sites across Canada selected for the UPSTREAM Project, led by the Canadian Centre for Safer Communities.

This two-year initiative focuses on:

- Preventing violence, hate, and social polarization
- Strengthening partnerships across government, civil society, and business
- Empowering communities to lead local prevention strategies

Mount Pearl is helping shape a national movement — amplifying local voices and building safer, more inclusive communities from the ground up.

New Website



This Spring, The City of Mount Pearl is launching a new website designed to make connecting with your city simpler than ever. Whether you're signing up for swimming lessons, reporting issues, or exploring events, you'll enjoy easier navigation, faster access to services, and a mobile-friendly experience.

Here's what to expect:

- A website built with accessibility features
- Digital applications for permits
- Easier access to the information you're looking for
- Enhanced search functionality
- Interactive tools
- Easier registration for recreation programs

We look forward to introducing you to our new website in 2026!



ALL PERMIT APPLICATIONS ARE NOW ONLINE!

Apply anytime, anywhere, from your phone, tablet, or computer.



SCAN THE QR CODE FOR FASTER PROCESSING, CLEAR GUIDELINES, AND FEE STRUCTURES

Need help or don't have a computer? Visit City Hall—our front counter has a tablet ready for you.



CITY OF MOUNT PEARL SECURES PEGNL PERMIT TO PRACTICE

The City of Mount Pearl has officially received its Permit to Practice from the Professional Engineers and Geoscientists Newfoundland and Labrador (PEGNL).

This permit enables the City to carry out in-house engineering work—such as design, inspection, and project management—under the oversight of licensed professionals.

Having our own licensed professionals means:

- Enhanced quality control
- Greater efficiency & cost savings
- Stronger risk management

This milestone reflects Mount Pearl's strategic investment in internal expertise.



44TH MOUNT PEARL SCHEDULE

LIGHT THE NIGHT FESTIVAL LAUNCH

FEBRUARY 5, 2026
6:00 PM - 7:00 PM
ST. DAVID'S PARK



FROSTY FUN WITH SHAUN MAJUMDER!

FEBRUARY 5, 2026
7:30 PM - 10:00 PM
GLACIER ARENA



FROSTY'S BREWFEEST

FEBRUARY 6, 2026
7:00 PM - 10:00 PM
REID COMMUNITY CENTRE



YOUTH GLOW SWIM

FEBRUARY 6, 2026
8:00 PM - 9:00 PM
SUMMIT CENTRE



FROSTY'S BIG BIRTHDAY PARTY

FEBRUARY 7, 2026
11:00 AM - 1:00 PM
GLACIER ARENA



FROSTY'S YOUTH NIGHT

FEBRUARY 7, 2026
6:00 PM - 8:00 PM
REID COMMUNITY CENTRE



FROSTY'S SHED PARTY

FEBRUARY 7, 2026
8:30 PM - 12:00 AM
GLACIER ARENA



FROSTY & FRIENDS FAMILY BREAKFAST

FEBRUARY 8, 2026
8:00 AM - 9:30 AM
REID COMMUNITY CENTRE



FROSTY'S NEWFIE BREAKFAST

FEBRUARY 8, 2026
10:30 AM - 12:00 PM
REID COMMUNITY CENTRE



FREE PUBLIC SWIM

FEBRUARY 8, 2026
3:30 PM - 4:15 PM
SUMMIT CENTRE



FROSTY'S COLD PLATE DINNER

FEBRUARY 8, 2026
5:00 PM - 8:00 PM
REID COMMUNITY CENTRE



FROSTY BINGO BONANZA

FEBRUARY 12, 2026
8:00 PM - 10:30 PM
REID COMMUNITY CENTRE



SNOWBALL DINNER & DANCE

FEBRUARY 13, 2026
8:00 PM - 1:00 AM
REID COMMUNITY CENTRE



WINTER BLOCK PARTY

FEBRUARY 14, 2026
12:00 PM - 2:00 PM
CENTENNIAL STREET



FROSTY FESTIVAL OF EVENTS

FROSTY UNCORKED

FEBRUARY 14, 2026
7:00 PM - 10:00 PM
REID COMMUNITY CENTRE



FROSTY'S PLAYGROUP

FEBRUARY 15, 2026
9:00 AM - 10:30 AM
REID COMMUNITY CENTRE



FREE FAMILY SKATE

FEBRUARY 15, 2026
2:30 PM - 3:45 PM
GLACIER ARENA



FROSTY'S DRAG BINGO

FEBRUARY 15, 2026
7:00 PM - 9:00 PM
REID COMMUNITY CENTRE



FOLLOW THE FROSTY FUN!

LIKE OUR PAGE AT [FACEBOOK.COM/FROSTYFESTIVAL](https://facebook.com/frostyfestival)
TO STAY UPDATED ON ALL THE LATEST FROSTY NEWS
AND ANNOUNCEMENTS.

COMMUNITY EVENTS

WE ARE SO EXCITED TO HAVE COMMUNITY PARTNERS HOSTING EVENTS THROUGHOUT
OUR COMMUNITY DURING FROSTY FESTIVAL!

FROM TRIVIA NIGHTS AND CARD GAMES TO CRAFTING SESSIONS AND CHURCH
SERVICES, OUR LOCAL ORGANIZATIONS AND BUSINESSES ARE BRINGING THE MAGIC OF
WINTER TO LIFE IN SO MANY WONDERFUL WAYS.

FLURRY UP AND SEE WHAT'S HAPPENING!

VISIT [FROSTYFESTIVAL.CA](https://frostyfestival.ca) OR SCAN THE QR CODE TO EXPLORE
ALL OF THE EXCITING EVENTS, ACTIVITIES, AND ENTERTAINMENT
LINED UP FOR FROSTY FESTIVAL 2026!



QUESTIONS?

EMAIL: [INFO@FROSTYFESTIVAL.CA](mailto:info@frostyfestival.ca)
PHONE: (709) 748.1000 EXT. 1206



Events



FROSTY FESTIVAL IS JUST THE TIP OF THE ICEBERG!

Our Events Team works behind the scenes all year long to bring you moments that matter, memories that last, and experiences that make Mount Pearl shine.

From coordinating every last detail to ensuring everything comes together seamlessly, our dedicated team ensures every event runs smoothly and creates lasting connections within our community.

In 2026, we're bringing back beloved favourites and developing exciting new events for the whole community to enjoy. Mark your calendars for Breakfast with the Easter Bunny, 20-Minute Makeover, Focus on Youth Awards, School's Out Movie, Canada Day Celebrations, Pride in the Pearl, City Days, and more!

Whether you're celebrating with family, connecting with neighbours, or discovering something new, there's something for everyone to look forward to.

Follow us on Facebook for details on these events and more. Get ready to make 2026 your most memorable year yet in Mount Pearl!

YOUTH DROP-IN CENTRE

Looking for a fun place for teens to connect? The City of Mount Pearl's Youth Drop-in Centre at the Reid Community Centre welcomes youth ages 13 to 18.

Drop by to enjoy games, use the gym, make new friends, and join exciting programs led by our Youth Services Team. It's a welcoming space designed just for you!

mountpearl.ca/youthprograms



YOUTH OPPORTUNITY FUND FOUNDATION

This foundation provides funding to groups, non-profits, and organizations focused on "youth helping youth."

It supports innovative projects that empower youth to create positive change within the community.



Want to learn more?

Check out the guidelines and application by scanning the QR code!



DAY CAMPS

Looking for fun-filled activities during school breaks? We offer two exciting programs: our Easter Explorers and our Summer Day Camp. These camps are incredibly popular and spots are limited, so register early!

Easter Explorers registration opens in late February; Summer Day Camp registration opens in early May. Registration is online only.

Learn more:

mountpearl.ca/youthprograms



Inclusive Mount Pearl



The City of Mount Pearl continues to advance accessibility, diversity, and inclusion—ensuring all residents feel welcome and supported.

Recent Highlights:

- Mural at Centennial Park - Created in partnership with First Light and Mi'kmaw artist Melissa Francis, this mural celebrates Mi'kmaw culture and connection to the land. It stands as a lasting symbol of respect, reconciliation, and unity.
- Pocket Talkers at Reception Desks - Hearing-assistive devices are now available at City Hall, the Summit Centre, and the Reid Centre, improving communication and accessibility for hearing-impaired visitors.

This year, the City of Mount Pearl is expanding inclusive programming to strengthen our commitment to accessibility and meaningful participation for all residents. We believe everyone deserves the opportunity to connect, grow, and thrive through recreation and wellness initiatives tailored to diverse needs and abilities.

Keep reading for a sneak peek at some of our new programs designed with inclusion in mind.



TIME™ PROGRAM

The TIME™ Program is a 10-week exercise class for adults facing balance or mobility challenges. It is designed by physiotherapists to help build strength, improve mobility, and gain independence.

Participants must be able to walk independently with or without a mobility aid. Sessions run twice weekly with flexible morning time slots.

**Referral by a healthcare professional is required.*



CARE DAY PROGRAM

The CARE Day Program (Community, Accessibility, Recreation & Engagement) is an inclusive daytime program for adults with disabilities.

Participants engage in recreation, creative arts, and swimming activities that promote independence and social connection in a supportive environment.

Open to adults 18 and older with cognitive, physical, or developmental disabilities, the program provides structured group-based activities.

Some participants may require a support worker to ensure safe and meaningful participation.

To learn more about both of these programs, please visit mountpearl.ca/inclusion



SENSORY-FRIENDLY SWIMS

Enjoy a calm swim for all ages at the Mount Pearl Summit Centre!

Our Sensory-Friendly Swims feature dimmed lights, minimal noise, and access to both pools.

Register at mountpearl.ca/register

Winter Tips ❄️

Winter in Mount Pearl is a beautiful time, and with the right information and preparation, you can make the most of it while staying safe. Whether you're tracking plows, learning about regulations, or enjoying the snowy trails, this guide has you covered. Stay informed, stay safe, and embrace the magic of a Mount Pearl winter!

SNOW CLEARING REGULATIONS

Mount Pearl residents are encouraged to be mindful of snow-clearing regulations to ensure a smooth snow season for all, including:

- **No Street Parking:** From December 1 to March 31 each year, no vehicles are allowed to be parked on any street within the city between 1 AM and 8 AM.
- **During a Storm:** While the snow or ice is falling and for 12 hours afterward, street parking is a no-go.
- **Shovelling Snow:** It's essential to keep driveways and parking lots clear, but never shovel or plow snow onto the streets, carriage ways, or sidewalks within the city.

These guidelines are in place to ensure our plows can do their work safely and efficiently. Violators may face fines for non-compliance, so make sure to review the official snow clearing regulations to avoid any issues.

SNOW PLOW TRACKER

Ever wonder when the plow will clear your street? Mount Pearl's Snow Plow Tracker comes to the rescue! This interactive map lets you follow city vehicles as they work to keep the roads safe and clear. You can even see where they've been in the past 2, 4, 12, and 24 hours. It's like having a personal snow clearing GPS!

To view, visit mountpearl.ca/plow-tracker



WEATHER INFORMATION CENTRE

Stay ahead of winter storms with the Weather Information Centre.

This resource offers tips on storm preparedness, links to local authorities, and up-to-date information on closures and service disruptions.

For more details, visit:
mountpearl.ca/weatherinfo

WINTER TRAILS

Winter is no reason to stay indoors!

The city grooms parts of its trail system for walking, snowshoeing, and cross-country skiing, giving residents a chance to enjoy a beautiful winter wonderland. For a list of groomed trails, visit **mountpearl.ca/parks-trails**

MAILBOXES

If snow piles up around your mailbox making it hard to access your mail, don't worry!

You can create a service ticket with Canada Post by visiting their website or calling 1.866.607.6301.

WINTER DAMAGE

If your property is damaged by city snow-clearing equipment, you can submit a request for repairs online at **mountpearl.ca/winterdamagereport**

Keep in mind that the City doesn't repair damages caused by large amounts of snow or damage to structures within residential yards.

SAFEY SNOWPLOW'S

SAFETY TIPS

Safey Snowplow says the best place to build snowmen is in your backyard! Here are some more reminders to stay safe this winter:

- Stay away from roads
- Snowplows are *huge* and take longer to stop, so give them plenty of space
- Wear bright clothes so drivers can see you easily
- If you get cold or wet, take a break inside to warm up
- Slide one at a time and always sit or kneel, facing forward
- Play in the snow with a friend and keep an eye on each other



Housing Accelerator Fund

UNLOCK YOUR PROPERTY'S POTENTIAL WITH \$10,000!

Housing is one of Mount Pearl's biggest challenges, and we're taking action.

Through the Housing Accelerator Fund, in partnership with the Government of Canada, the City of Mount Pearl is offering a \$10,000 Accessory Dwelling Incentive to help you create more housing options.

Turn unused space into opportunity:

- Convert unapproved units into legal dwellings
- Build a detached garden suite
- Add a self-contained apartment within your home

One grant per civic address. Let's grow together and make housing more accessible for everyone.

Apply today at mountpearl.ca/housing

Your property. Your potential.





HEY MOUNT PEARL

This is where your feedback and ideas help shape the future of our City.

Reasons to Sign Up:

- Stay up to date on City projects
- Share feedback
- Be part of decisions that matter

Let's build a better Mount Pearl, together!
Visit heymountpearl.ca for details.



YOUR CITY, YOUR VOICE

JOIN THE CONVERSATION. SIGN UP TODAY.

SIGN UP FOR CITIZEN ALERT

Get the information you need —
fast with Citizen Alert.

Sign up to receive communications directly from the
City of Mount Pearl.

Be the first to know about emergencies, service
interruptions, and more.

Stay connected with phone calls, text messages,
or emails; it's your choice.

Go to mountpearl.ca/citizen-alert to learn more.



Traffic Calming



SAFER STREETS START HERE

The City of Mount Pearl recently launched its Traffic Calming Policy to create safer, more livable neighborhoods. Since its introduction, we've received over 120 community requests and completed our first installation on Brant Drive.

More improvements are coming—installations on Lasalle Drive, Pollux Drive, and Bannister Street begin in spring 2026, with additional projects planned later in the year.

Traffic calming incorporates proven design features such as speed humps, raised crosswalks, curb extensions, lane narrowing, and radar feedback signs to encourage safer driving. All projects follow best practices from the Transportation Association of Canada and the Institute of Transportation Engineers.



WANT SAFER STREETS?
SCAN THE QR CODE OR SUBMIT A REQUEST AT
MOUNTPEARL.CA/TRAFFIC AND HELP SHAPE
THE FUTURE OF YOUR NEIGHBOURHOOD.



ST. DAVID'S PARK SOCIAL WALKS

With its cleared and salted pathways, St. David's Park offers a safe and accessible destination for walking in all seasons—even during the coldest winter months.

Starting January 6, join us every Tuesday at 6 PM for a community walk through the park. These evening walks are designed to help you stay active during the winter while enjoying the company of others. Whether you're looking for light exercise, fresh air, or simply a chance to connect with others, these walks offer the perfect opportunity.

All ages and fitness levels are welcome—bring your friends, family, or come solo and meet new people. We look forward to walking with you!



SAFE SENIORS WALKS

Every Thursday at 10 AM, join Municipal Enforcement Officers for a guided walk through Mount Pearl's scenic trails.

These walks provide a wonderful opportunity to enjoy the beauty of nature, meet neighbours, and stay active in a safe, supervised environment. Runs weekly until trails are snow-covered.

For the latest schedule updates and weather-related changes, visit mountpearl.ca/safeseniorswalks or call 709.748.1000



NEIGHBOURHOOD WATCH

Join the Neighbourhood Watch Program and be part of the solution in keeping our community safe!

This innovative crime prevention initiative brings neighbours together to combat crime before it starts. By working collaboratively, we can create a safer environment for everyone.

Learn more: mountpearl.ca/neighbourhood-watch



2026

WASTE GUIDE

Weekly Waste Collection

HOW IT WORKS



Place recyclables in **clear** blue bags.



Place household garbage in **clear** bags inside the city-provided cart.



Two small **privacy bags** are allowed per cart.



No loose garbage in carts.



Place recycling and garbage cart at the **curb**.

CART PLACEMENT

PARK IT

Place the cart with the wheels against the curb.



POINT IT

The arrows on the cart should face the road



SPACE IT

Leave at least an arm's length of clearance on all sides.



PLEASE NOTE: If you live on Ruth Avenue, Commonwealth Avenue or Topsail Road, please place cart at the **end of your driveway**.

ADDITIONAL NOTES

- All garbage must be placed in the city-provided carts.
- Carts must be at the curb by 8 AM on collection days.
- Carts shouldn't be placed on the curb the evening before collection day.
- Lids must be fully closed, and cart weight should not exceed 136 kg (300 lbs).
- Privacy bags (two allowed) must not exceed 54.9 cm x 58.4 cm.

WHAT'S NEW FOR 2026: COLLECTION ZONE UPDATES

We've updated both bulk collection zones and weekly collection zones throughout the city to improve efficiency and provide better service.

To find your updated collection schedule for weekly garbage and recycling—as well as your new bulk collection zone—please refer to pages 29 to 34 of this guide. Simply look up your address to confirm your collection day and bulk zone.

COLLECTION SCHEDULE CHANGES

Regular garbage and recycling are collected weekly, Tuesday to Friday. For holiday and bulk garbage collection, please refer to the schedule below:

Holiday	Impacted Collection Date	Revised Collection Date
New Years Day	Thursday, January 1, 2026	Monday, January 5, 2026
St. Patrick's Day	Tuesday, March 17, 2026	Monday, March 16, 2026
Good Friday	Friday, April 3, 2026	Monday, April 6, 2026
Canada Day	Wednesday, July 1, 2026	Monday, June 29, 2026
Regatta Day	The day that Regatta proceeds	Monday, August 10, 2026
National Day of Truth & Reconciliation	Wednesday, September 30, 2026	Monday, September 28, 2026
Remembrance Day	Wednesday, November 11, 2026	Monday, November 9, 2026
Christmas Day *	Friday, December 25, 2026	Thursday, December 24, 2026

* Please note – During the week of Christmas, all streets garbage collection will be scheduled for one day earlier. Boxing Day is unaffected.

UNEXPECTED SCHEDULE CHANGES

For collection postponements due to adverse weather or other circumstances, please stay tuned to social media and our website, mountpearl.ca/garbage

You may also sign up for the city's Citizen Alert service to receive notifications through phone calls, text messages, and/or emails. For more information, please visit mountpearl.ca/citizen-alert

WINTER COLLECTION INSTRUCTIONS:

During the winter months, snow and ice can affect collection. Follow these guidelines to ensure your garbage and recycling is collected:

- Adjust cart placement to avoid obstructing snowplows.
- Find a clear space and place your cart as close to the street as possible, without obstructing the street or sidewalk. Remember, the arm on the collection truck can only reach a maximum of 10 feet.
- Avoid placing carts on or behind snowbanks.
- After collection, promptly return your cart to a secure location on your property.
- Use discretion when setting out recyclables on windy days, they may be held until the following week.

ORGANIC YARD WASTE COLLECTION

Once the snow melts, yard maintenance begins! We've made an important change to the City of Mount Pearl's Organic Yard Waste Collection Program to help protect the environment and reduce costs.

We no longer accept plastic bags for yard waste collection. Only compostable paper bags will be collected.

What You Need to Know:

- Collection runs May 1 to November 29.
- Rain-soaked bags won't be collected.
- Place leaves and grass in paper bags next to your garbage cart (at least one metre away).
- Unlimited bags allowed; 50 lbs max per bag.
- Not accepted: stumps, root balls, sweepings, animal waste, dirt, rocks, or noxious weeds.

For more details, visit: mountpearl.ca/yardwaste

Bulk Garbage Collection

WHAT'S ALLOWED IN BULK GARBAGE?

ACCEPTED



Sofas, Chairs & Furniture



Bathroom Fixtures



Minor Renovation Materials



Mattresses & Boxsprings
(Must be sealed in a plastic bag)



Glass
(Must be securely packaged)



Garden Waste & Twigs
(Must be enclosed in a paper bag)



Wood Waste
E.g. trees, branches, and small logs.
Must be a diameter of 6 inches or less, a length of 4 feet or less, and neatly bundled, tied and free of the following:

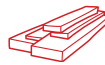
- Construction or building materials.
- Anything that contains dirt, sand, gravel, rocks, or metal.
- lumber, fence posts, signs, roots or stumps.

For more info visit:
mountpearl.ca/garbage



Other Bulk Garbage Items
Normally associated with household

NOT ACCEPTED



Construction/Building Materials



Concrete



Landscaping Materials

Including:

- Sods
- Soil
- Rocks, gravel, or pebbles



Oil Products
driveway sealant, motor, cooking oil



Auto and other machine parts
including tires with or without rims



Paint, Electronics & More
See MMSB website to learn more



Any items with nails attached



Loose Materials not boxed,
bundled or placed in bags



THINK BEFORE YOU TOSS

Please consider donating items that are not soiled or damaged - this helps us divert waste from our landfills!

PRESCHEDULED BULK GARBAGE COLLECTION

Prescheduled bulk garbage collection occurs once a year in May and June, providing residents with convenient opportunities to dispose of large items that don't fit in regular garbage carts.

During these scheduled collection periods, you can set out items such as furniture, appliances, and other oversized materials for pickup on your designated collection day.

If you need to dispose of bulk items outside your scheduled collection period, you can book a paid collection service. This service is available on May 4 and May 11, and anytime between June 22 and November 30 each year.

To schedule a special bulk collection, learn about pricing, or find out what items are accepted, please call 709.748.1000

UNDERSTANDING YOUR BULK ZONE

Find your street name in the table on the following pages. Your regular collection day is next to the street name and to the immediate right you will find your “Bulk Zone”.

Refer to pages 29 - 34 to find your bulk garbage zone.

Zone	Garbage Collection Date
1	May 19 - 22
2	May 25 - 29
3	June 1 - 5
4	June 8 - 12
5	June 15 - 19

OTHER GUIDELINES:

- You **MUST** separate metals from other bulk garbage.
- Bulk items must not be placed to the curb until the evening before the scheduled pick-up day.
- Items must be placed at the curb by 8 AM on your collection day.
- Loose materials must not exceed 22kg (50 lbs).
- Items not intended for bulk collection should be removed from the curb.

Not sure what do you do with your other waste? Visit mountpearl.ca/recycle

2026 MOUNT PEARL WASTE COLLECTION SCHEDULE

Street	Collection Day	Bulk	Street	Collection Day	Bulk
Abbey Lane	Friday	Zone 5	Bonfoy Place	Tuesday	Zone 2
Amber Place	Friday	Zone 5	Bradley Place	Tuesday	Zone 2
Armstrong Crescent	Thursday	Zone 3	Bragg Crescent	Friday	Zone 5
Ash Place	Friday	Zone 5	Brant Drive	Tuesday	Zone 1
Ashford Drive	Wednesday	Zone 3	Brett Place	Friday	Zone 5
Aspenwood Place	Tuesday	Zone 1	Brodie Street	Tuesday	Zone 1
Athens Drive	Friday	Zone 2	Burgess Avenue	Friday	Zone 5
Avery Place	Thursday	Zone 4	Burrage Avenue	Thursday	Zone 4
Babb Crescent	Wednesday	Zone 2	Cadiz Close	Friday	Zone 5
Badcock Place	Wednesday	Zone 3	Careen Lane	Thursday	Zone 4
Badger Place	Tuesday	Zone 1	Carleton Drive	Wednesday	Zone 3
Baffin Drive	Tuesday	Zone 1	Carroll Drive	Friday	Zone 5
Bannister Street	Thursday	Zone 4	Castlehaven Place	Tuesday	Zone 1
Barbour Drive	Friday	Zone 5	Castors Drive	Tuesday	Zone 1
Bartlett Place	Thursday	Zone 3	Chambers Cove Avenue	Tuesday	Zone 1
Benson Place	Wednesday	Zone 2	Champlain Crescent	Tuesday	Zone 1
Bettney Place	Friday	Zone 5	Chancery Place	Friday	Zone 5
Billard Avenue	Thursday	Zone 4	Churchill Avenue	Thursday	Zone 4
Birch Avenue	Thursday	Zone 4	Clinton Place	Tuesday	Zone 2
Blackmarsh Road	Thursday	Zone 1	Clover Brae Crescent	Thursday	Zone 1
Blade Crescent	Tuesday	Zone 1	Cochius Lane	Thursday	Zone 4
Blamey Place	Tuesday	Zone 1	Collingwood Crescent	Friday	Zone 5
Blandford Place	Friday	Zone 5	Collins Place	Thursday	Zone 3
Bletchley Crescent	Friday	Zone 5	Commander Place	Thursday	Zone 4
Blossom Avenue	Thursday	Zone 4	Commonwealth Avenue	Thursday	Zone 4

2026 MOUNT PEARL WASTE COLLECTION SCHEDULE

Street	Collection Day	Bulk	Street	Collection Day	Bulk
Corte Real Place	Tuesday	Zone 1	Evans Place	Tuesday	Zone 1
Crewe Place	Wednesday	Zone 3	Exploits Place	Tuesday	Zone 1
Crocker Place	Friday	Zone 5	Fairweather Avenue	Wednesday	Zone 3
Croucher Crescent	Thursday	Zone 4	Farrell Drive	Tuesday	Zone 1
Crystal Place	Friday	Zone 5	Finlaystone Drive	Tuesday	Zone 1
Dalhousie Crescent	Wednesday	Zone 3	Firgreen Avenue	Thursday	Zone 4
Dalton Avenue	Friday	Zone 5	First Street (Civic Addresses 1-6)	Tuesday	Zone 3
Darby Place	Wednesday	Zone 2	First Street (Civic Addresses 15-62)	Thursday	Zone 2
Davis Place	Thursday	Zone 4	Fleet Street	Friday	Zone 5
Delaney Avenue	Thursday	Zone 4	Forest Avenue	Thursday	Zone 4
Denine Place	Friday	Zone 5	Forsey Place	Tuesday	Zone 1
Diamond Place	Wednesday	Zone 3	Fourth Street	Thursday	Zone 3
Dollard Place	Wednesday	Zone 2	Frobisher Avenue	Tuesday	Zone 1
Donovan Street	Tuesday	Zone 2	Frontenac Avenue	Tuesday	Zone 1
Dunluce Crescent	Tuesday	Zone 1	Gadwall Place	Thursday	Zone 1
Dunne's Lane	Thursday	Zone 4	Galway Crescent	Tuesday	Zone 1
Dunn's Road	Thursday	Zone 4	Gates Place	Friday	Zone 5
Dunrobin Street	Tuesday	Zone 1	Gibraltar Close	Friday	Zone 5
Easton Place	Wednesday	Zone 3	Giles Place	Wednesday	Zone 3
Edinburgh Drive	Thursday	Zone 3	Gilham Crescent	Friday	Zone 5
Edwards Place	Wednesday	Zone 2	Gillespie Place	Thursday	Zone 3
Elmcliffe Street	Tuesday	Zone 1	Gillett Place	Friday	Zone 5
Emberley Place	Thursday	Zone 4	Glendale Avenue	Tuesday	Zone 2
Emerald Drive	Friday	Zone 5	Glendenning Place	Thursday	Zone 3
Eriksson Crescent	Tuesday	Zone 1	Goldeneye Place	Thursday	Zone 1

2026 MOUNT PEARL WASTE COLLECTION SCHEDULE

Street	Collection Day	Bulk	Street	Collection Day	Bulk
Gosse Place	Friday	Zone 5	Jacobs Place	Wednesday	Zone 2
Graham Place	Friday	Zone 5	Jacqueline Road	Thursday	Zone 3
Grandy Crescent	Tuesday	Zone 1	Jeffers Drive	Wednesday	Zone 3
Greenwood Crescent	Thursday	Zone 1	Jeffers Place	Wednesday	Zone 3
Grey Place	Wednesday	Zone 2	Jersey Avenue	Thursday	Zone 4
Groves Place	Thursday	Zone 4	Jubilee Place	Thursday	Zone 4
Gushue Avenue	Wednesday	Zone 3	Kean Place	Thursday	Zone 3
Hagen Place	Friday	Zone 5	Kelburn Place	Tuesday	Zone 1
Halleran Place	Friday	Zone 5	Kennedy Place	Thursday	Zone 3
Hann Place	Wednesday	Zone 3	Keough Crescent	Tuesday	Zone 2
Hanrahan Place	Friday	Zone 5	Lady Anne Place	Tuesday	Zone 1
Harlequin Crescent	Thursday	Zone 1	Lancaster Crescent	Wednesday	Zone 3
Harnum Crescent	Tuesday	Zone 2	Larsen Street	Tuesday	Zone 1
Harvard Drive	Wednesday	Zone 3	LaSalle Drive	Tuesday	Zone 1
Hemmer Jane Drive	Tuesday	Zone 1	Laumann Place	Friday	Zone 2
Hillhurst Street	Tuesday	Zone 1	Laval Place	Wednesday	Zone 3
Hodder Place	Friday	Zone 5	Lawn Point Avenue	Tuesday	Zone 1
Holden Street	Tuesday	Zone 1	LeDrew Place	Wednesday	Zone 3
Horatio Close	Friday	Zone 5	Leger Crescent	Tuesday	Zone 2
Hounsell Avenue	Friday	Zone 5	Lidstone Crescent	Wednesday	Zone 2
Hubbard Place	Tuesday	Zone 1	Lindbergh Crescent	Wednesday	Zone 3
Humber Drive	Tuesday	Zone 1	Luther Place	Tuesday	Zone 1
Ingerman Street	Tuesday	Zone 1	MacCarthy Crescent	Tuesday	Zone 2
Iron Springs Road	Tuesday	Zone 1	Macroon Place	Tuesday	Zone 1
Jackman Drive	Friday	Zone 5	Maisonneuve Drive	Tuesday	Zone 1

2026 MOUNT PEARL WASTE COLLECTION SCHEDULE

Street	Collection Day	Bulk	Street	Collection Day	Bulk
Manley Place	Friday	Zone 2	Nash Crescent	Tuesday	Zone 1
Maple Place	Thursday	Zone 4	Neal Place	Friday	Zone 5
Maple Street	Thursday	Zone 4	Nelder Drive	Wednesday	Zone 2
Marclay Avenue	Thursday	Zone 4	Nelson Place	Wednesday	Zone 3
Marconi Place	Wednesday	Zone 3	Norman Drive	Friday	Zone 5
Marlin Drive	Tuesday	Zone 1	Norma's Avenue	Thursday	Zone 3
Massey Crescent	Tuesday	Zone 2	O'Flaherty Crescent	Wednesday	Zone 2
McCurdy Place	Friday	Zone 5	O'Keefe Avenue	Thursday	Zone 4
McGill Crescent	Wednesday	Zone 3	Old Placentia Road	Friday	Zone 5
McGrath Crescent	Wednesday	Zone 2	Olympic Drive	Friday	Zone 2
McMaster Place	Wednesday	Zone 3	Opal Place	Friday	Zone 5
Medley Place	Wednesday	Zone 2	Orchard Avenue	Thursday	Zone 4
Michener Avenue (Civic Addresses 1-137)	Wednesday	Zone 2	Osmond Place	Wednesday	Zone 2
Michener Avenue (Civic Addresses 2-160)	Tuesday	Zone 2	Oxford Crescent	Wednesday	Zone 3
Moffatt Road	Tuesday	Zone 1	Paddon Place	Wednesday	Zone 2
Montclair Street	Tuesday	Zone 1	Park Avenue	Thursday	Zone 4
Montgomery Street	Tuesday	Zone 2	Parsons Avenue	Thursday	Zone 4
Moores Drive	Wednesday	Zone 2	Peckford Place	Wednesday	Zone 2
Mortimore Drive	Friday	Zone 5	Pembury Close	Thursday	Zone 1
Mount Carson Avenue	Tuesday	Zone 1	Penmore Drive	Thursday	Zone 4
Mount Carson Place	Tuesday	Zone 1	Pike Place	Friday	Zone 5
Munden Drive	Friday	Zone 5	Pinebud Crescent	Thursday	Zone 4
Municipal Avenue	Thursday	Zone 4	Pinware Crescent	Tuesday	Zone 1
Murley Drive	Friday	Zone 5	Pittman Place	Thursday	Zone 4
Muskerry Place	Tuesday	Zone 2	Pleasant Avenue	Thursday	Zone 4

2026 MOUNT PEARL WASTE COLLECTION SCHEDULE

Street	Collection Day	Bulk	Street	Collection Day	Bulk
Pollux Drive	Tuesday	Zone 1	Selkirk Drive	Tuesday	Zone 1
Portsmouth Close	Friday	Zone 5	Senate Crescent	Wednesday	Zone 2
Princeton Crescent	Wednesday	Zone 3	Simcoe Drive	Tuesday	Zone 1
Pumphrey Avenue	Wednesday	Zone 3	Smallwood Drive (Civic Addresses 1-147 & 2-124)	Thursday	Zone 4
Putney Place	Friday	Zone 5	Smallwood Drive (Civic Addresses 128-146 & 151-165)	Friday	Zone 2
Relay Road	Friday	Zone 5	Spruce Avenue	Thursday	Zone 4
Rideau Place	Wednesday	Zone 2	St. Andrews Avenue	Thursday	Zone 3
Riverview Avenue	Thursday	Zone 4	St. David's Avenue	Thursday	Zone 3
Rodes Place	Friday	Zone 5	St. Lawrence Place	Tuesday	Zone 1
Roehampton Place	Friday	Zone 5	Stojko Place	Friday	Zone 2
Roland Drive	Thursday	Zone 3	Stonefield Place	Tuesday	Zone 1
Roosevelt Avenue (Civic Addresses 1-24)	Thursday	Zone 2	Stonegate Crest	Thursday	Zone 1
Roosevelt Avenue (Civic Addresses 26-67)	Tuesday	Zone 3	Sunrise Avenue	Thursday	Zone 3
Rosedale Place	Thursday	Zone 4	Surin Street	Friday	Zone 2
Royal Sovereign Close	Friday	Zone 5	Sycamore Place	Thursday	Zone 4
Ruth Avenue	Thursday	Zone 2	Talon Place	Wednesday	Zone 2
Samson Street	Wednesday	Zone 2	Tavenor Place	Tuesday	Zone 1
Sandhurst Close	Friday	Zone 5	Teasdale Street	Thursday	Zone 3
Sapphire Crescent	Friday	Zone 5	Thames Place	Friday	Zone 5
Sauve Street	Wednesday	Zone 2	Third Street	Thursday	Zone 3
Scammell Crescent	Thursday	Zone 3	Thomey Place	Wednesday	Zone 3
Schreyer Crescent	Wednesday	Zone 2	Toope Place	Wednesday	Zone 2
Seabright Place	Tuesday	Zone 1	Topaz Place	Friday	Zone 5
Sears Street	Tuesday	Zone 2	Topsail Road	Tuesday	Zone 1
Second Street	Thursday	Zone 3	Tower Lane	Friday	Zone 5

2026 MOUNT PEARL WASTE COLLECTION SCHEDULE

Street	Collection Day	Bulk	Street	Collection Day	Bulk
Trafalgar Drive	Friday	Zone 5	Whitehall Place	Friday	Zone 5
Trudeau Place	Wednesday	Zone 2	Whiteley Drive	Wednesday	Zone 3
Truxtun Place	Tuesday	Zone 1	Wilchris Place	Friday	Zone 5
Tweedsmuir Place	Tuesday	Zone 2	Wilcox Place	Friday	Zone 5
Valleyview Avenue	Thursday	Zone 4	Wilkes Avenue	Tuesday	Zone 1
Victory Lane	Friday	Zone 5	Wilson Crescent	Friday	Zone 2
Waterloo Crescent	Wednesday	Zone 3	Winsor Place	Friday	Zone 5
Webb Place	Tuesday	Zone 2	Winston Avenue	Thursday	Zone 4
Wellington Crescent	Wednesday	Zone 3	Woodford Drive	Wednesday	Zone 3
Wells Crescent	Wednesday	Zone 2	Woodford Place	Wednesday	Zone 3
Wembley Crescent	Friday	Zone 5	Worrall Crescent	Thursday	Zone 4
Westbrook Landing	Friday	Zone 5	Wyatt Boulevard	Tuesday	Zone 1
Westminster Drive	Friday	Zone 5	Yale Place	Wednesday	Zone 3
Whelan Avenue	Wednesday	Zone 3	Yetman Drive	Friday	Zone 5



WHEN IS GARBAGE DAY?

OUR COLLECTION DAY IS: _____

OUR BULK GARBAGE IS ON: _____





mountpearl.ca